

Did You Know?

Most people know that clean water in rivers and streams is critical to the growth and survival of salmon, but the riparian zone — the corridor of vegetated land that runs along a river — is just as important.

A **healthy riparian zone** has an abundance of native vegetation and provides significant benefits for landowners, fish, and the community as a whole...

- Lowers nearshore water temperatures
- Decreases nearshore stream velocity
- Provides terrestrial insects for fish to feed on
- Filters sediment and pollutants from surface runoff
- Buffers against high water events, such as floods

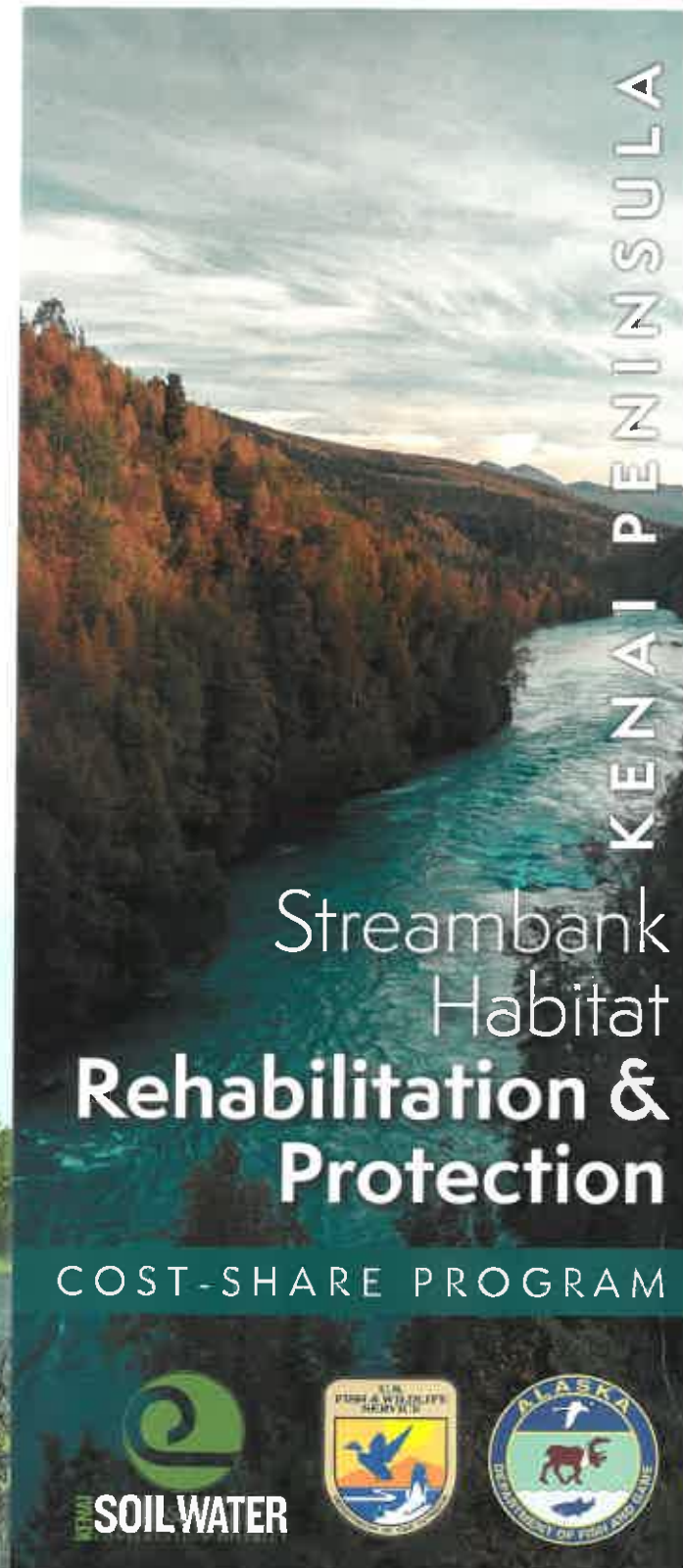


The Kenai Peninsula Streambank Habitat Rehabilitation & Protection Cost-Share Program is administered cooperatively by the Alaska Department of Fish and Game (ADF&G) and the United States Fish and Wildlife Service (USFWS), in partnership with the Kenai Soil & Water Conservation District.

DFG.DSF.StreambankRehab@alaska.gov




Illustrator: Shelly Marshall | ShellARTstudio.com



KENAI PENINSULA

Streambank Habitat Rehabilitation & Protection

COST-SHARE PROGRAM





KENAI RIVER

Healthy Riparian Zone BENEFITS

For landowners...

- A more stable streambank
- Provides protection from boat wakes
- Holds soils and reduces erosion
- Promotes conservation of our waterways & salmon

For fish...

- Cover from predators
- Slow water for resting and migration
- Insects for food
- Cool and clean water
- Clean spawning gravels

For our community...

- Healthy salmon habitats
- Aesthetically pleasing river
- Filtering sediment & pollutants from surface runoff
- Slowing flood waters



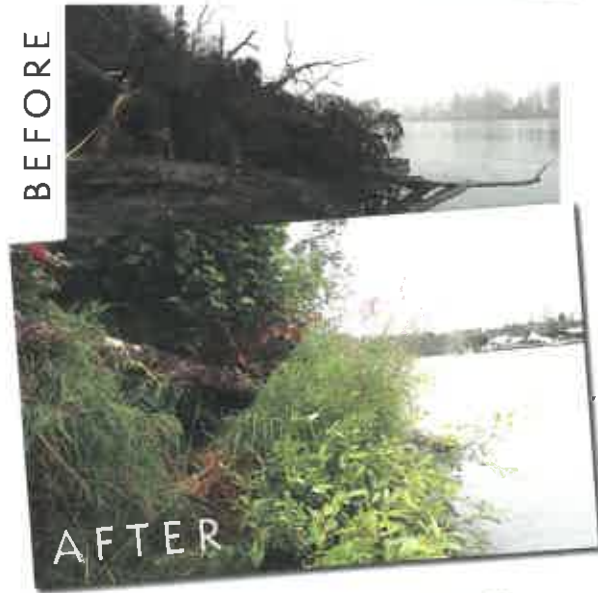
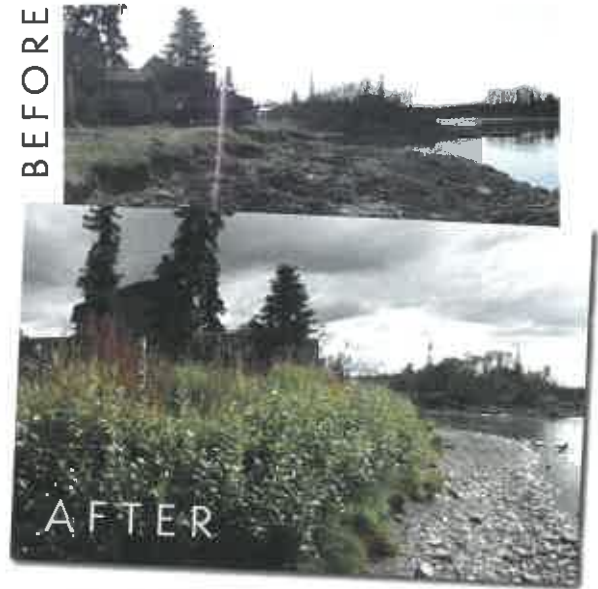
What's Available:

We provide private landowners with technical **expertise & funding** for habitat rehabilitation and protection projects along salmon streams throughout the Kenai Peninsula.

Our techniques include...

- Planting native vegetation
- Hydroseeding banks
- Installing a combination of brush layers, coir logs, and trenched willows
- Installing cabled spruce trees
- Installing Elevated Light Penetrating (ELP) walkways and platforms

These bioengineering and protection techniques are designed to prevent accelerated rates of erosion & provide invaluable **habitat** for juvenile salmon. Accelerated rates of erosion frequently occur due to human activities.



To learn more about how you can help, **please email us at**
DFG.DSF.StreambankRehab@alaska.gov